



Visual Guide



This is the National Museum of Ireland on Kildare Street.
The Museum is free to visit.

Arriving at the Museum

I will walk through a black metal gate on Kildare Street to enter the grounds of the Museum.

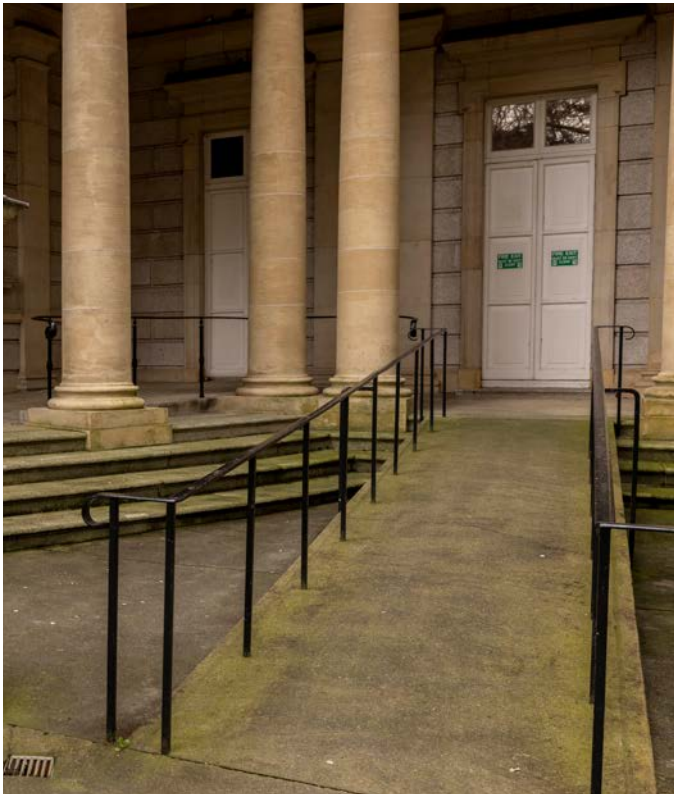
The Museum is on the right hand side of Leinster House. The Dáil and Seanad Eireann meet in Leinster House. I might see some politicians, journalists, camera people and protests on the street. Sometimes there can be a lot of people and it can be noisy and the street can be busy.



Arriving at the Museum Continued

If I need to use a ramp, there is one at the right hand side after I walk through the black gates.

These steps will bring me up to the front door of the Museum.



I will then walk through the front door of the Museum.



I might see groups getting ready to enter the Museum or leaving after their visit.

Inside the Museum

When I walk through the front door, I will walk through an automatic door that will open for me. I will then see a large bright circular room with a high ceiling. This room is called the Rotunda and the reception is here.



Inside the Museum Continued

On the right hand side in the Rotunda, I will see the reception desk.

Behind the reception desk, I will see two screens.



I can sit on the benches in this room.

Reception

At the reception desk I will see the Visitor Security Officers (VSOs). If I have any questions, they will answer them for me.

The Visitor Security Officers (VSOs) wear a uniform and it looks like this.

There will also be VSOs walking around the Museum. If I have any questions or need help during my visit, I can ask them.



The reception area can be busy and noisy if there are groups visiting the Museum. I may have to wait before talking to someone on the reception desk.

Resources

On the reception desk, I can take a Museum Floor Plan for my visit which will help me find my way around the Museum.



If I want a rest, there are some benches and seats in the Museum. I can ask at reception to borrow a black stool to take with me.



I can use my ear defenders, sunglasses, and fidget toys in the Museum to help me feel comfortable. The Museum is also service-dog friendly.

Resources Continued

To the left of the reception desk I will see another screen.
This screen has more information that I can look at about the Museum.



Underneath this screen, I will see some flyers and activity booklets. I can take these and use them as part of my visit if I wish. I can bring a pencil with me to fill out an activity booklet.



Toilets

The toilets are located at the back of the Museum, on the far side of the centre court.



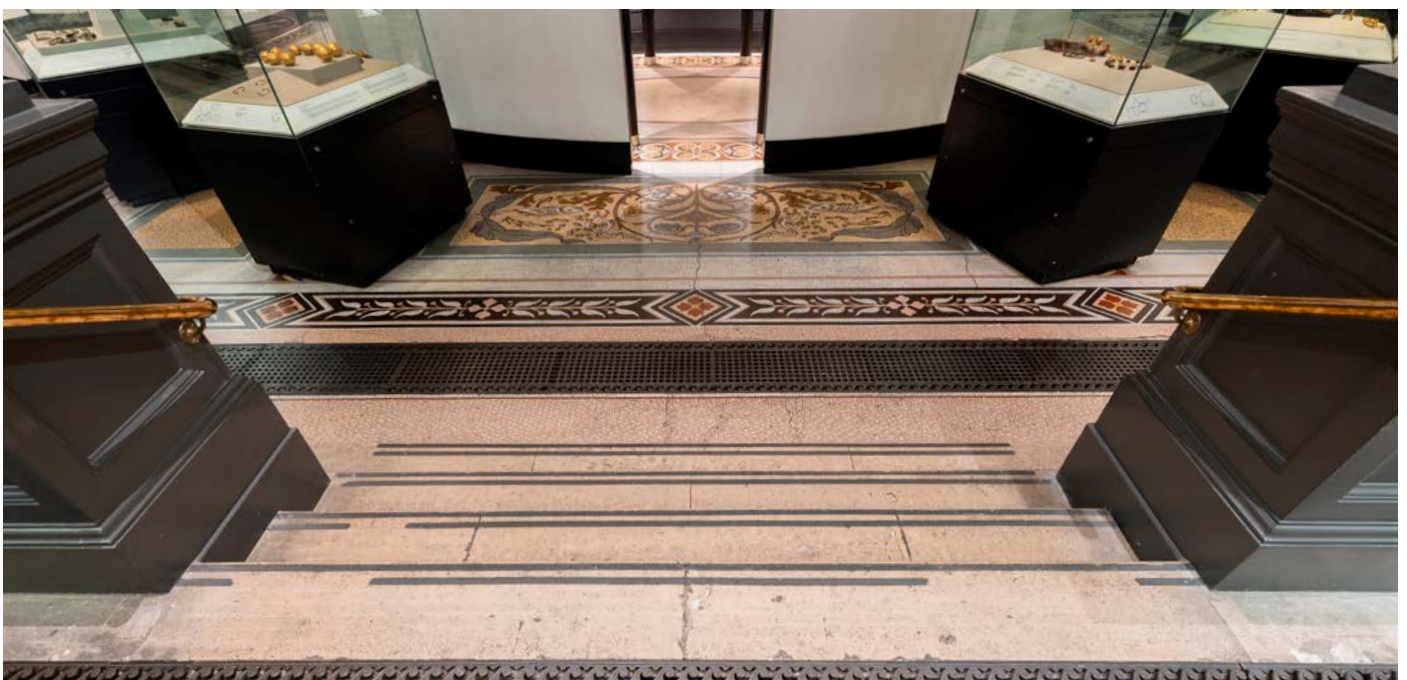
Toilets Continued

There are two ways that I can walk to the toilets.

When I enter the centre court, I can turn left and walk around the room clockwise.

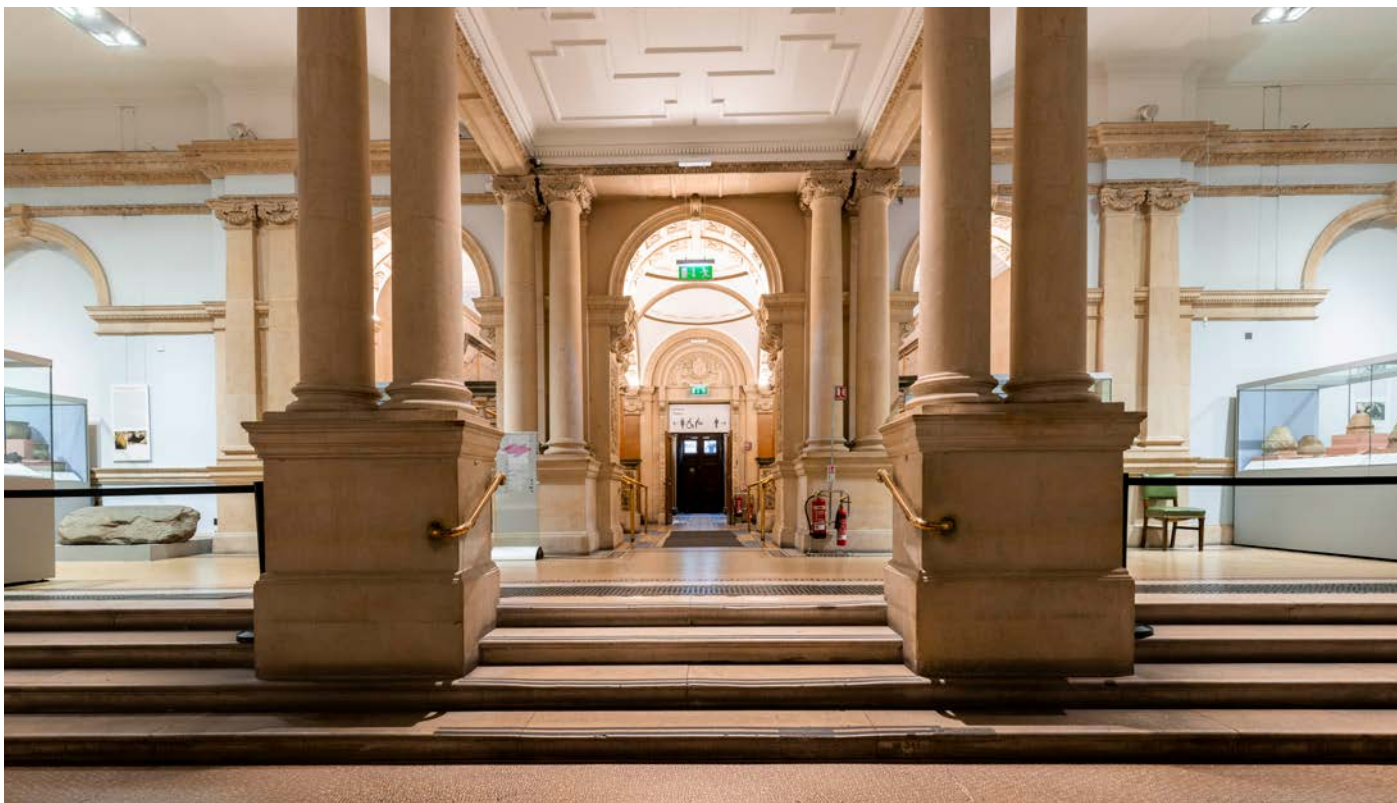


I can also walk down the steps in front of me, walk around a large white oval feature, and back up the steps.



Toilets Continued

I can see a large arch with two staircases on either side.
I walk under the arch and past the stairs to the toilets.



Toilets Continued

I will see the female toilets on the left and the male toilets on the right. There is one accessible toilet on the left hand side.

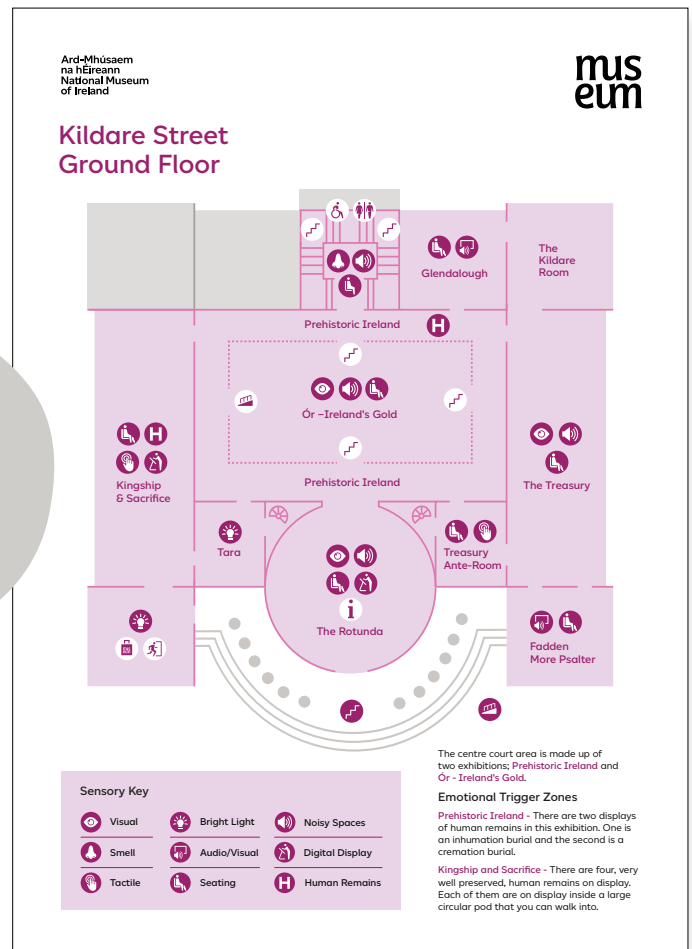
The hand dryers are loud and the toilets might be busy.



Sensory Map and Quiet Spaces

I can download the Museum Sensory Map from the Museum website. The Sensory Map shows the different sensory experiences in each part of the Museum.

The map marks Emotional Trigger Zones, showing exhibitions that may explore uncomfortable or sensitive topics. It also shows where human remains are on display.



The Museum does not have a specific quiet sensory room, but the map helps me find quieter galleries such as the Fadden More Psalter exhibition on the ground floor.

If I need some time to rest or regulate, I can take a rest on the benches or seats in the Museum. I can also go outside for a break and sit on the benches there.



Exploring The Museum

I will go through the large door in the reception to explore the Museum.



When I go through this door I will enter a large space with a very high ceiling. This is the centre court.



Exploring The Museum Continued

There are smaller rooms around this large space that I can go into and explore. To go into these exhibitions, I will walk through decorated doorways.



Exploring The Museum Continued

I can use the steps to walk down to the middle of the centre court.



I can also use the ramp on the left hand side to go down.

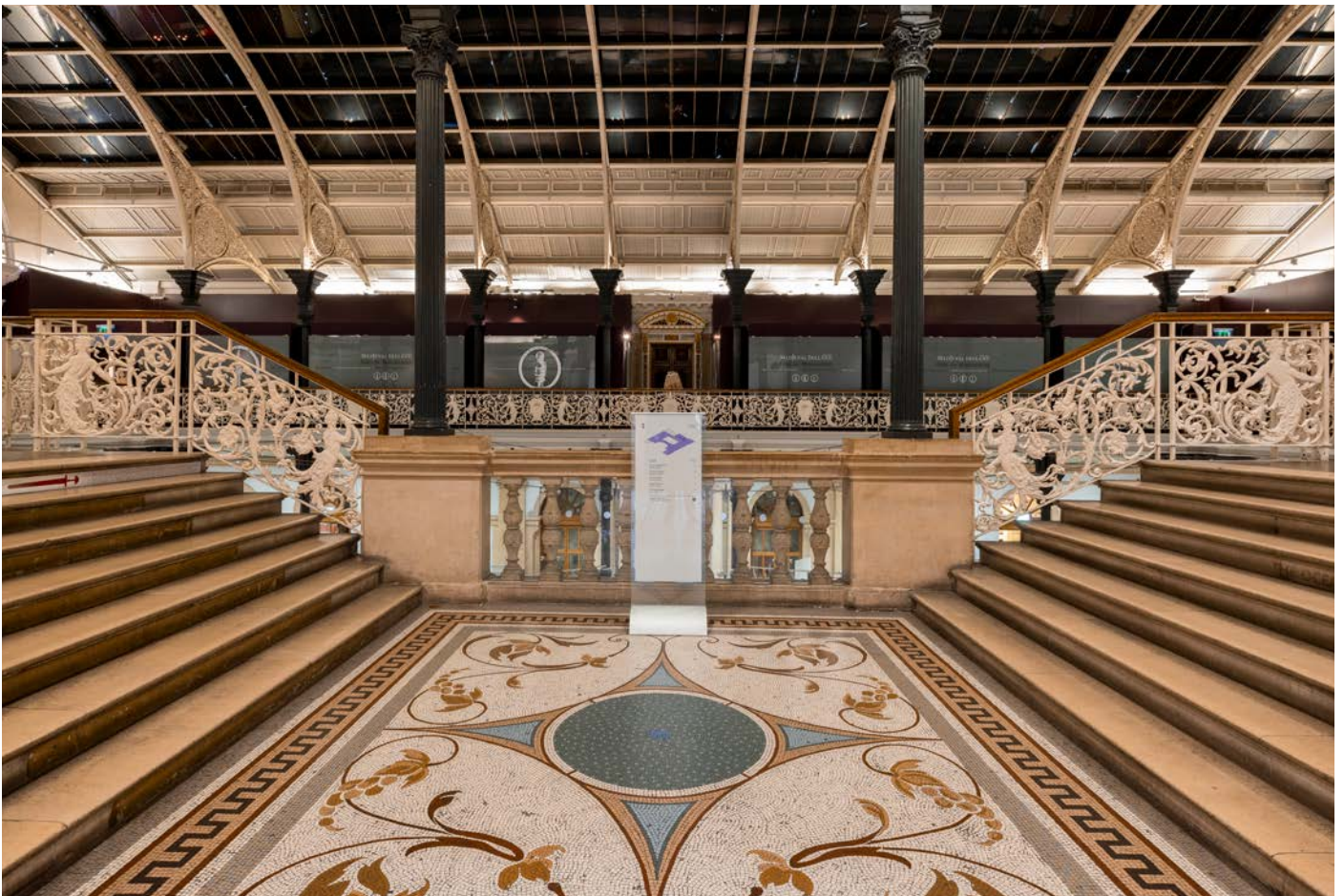


Exploring The Museum Continued

At the back of the centre court there is a staircase that I can use to access the first floor of the Museum. I can go up on either the left side or the right side to reach the first floor. There is no lift in the Museum to access the first floor.



When I get upstairs, I will walk onto a balcony.
I can go left or right to explore the Museum further.



Exploring The Museum Continued

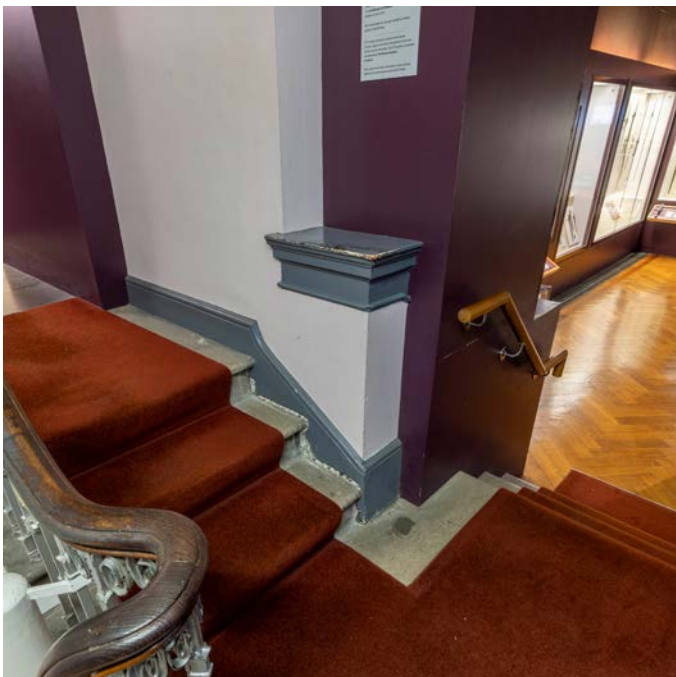
There are a few short series of steps throughout the Museum. Each of these are marked on the sensory map.



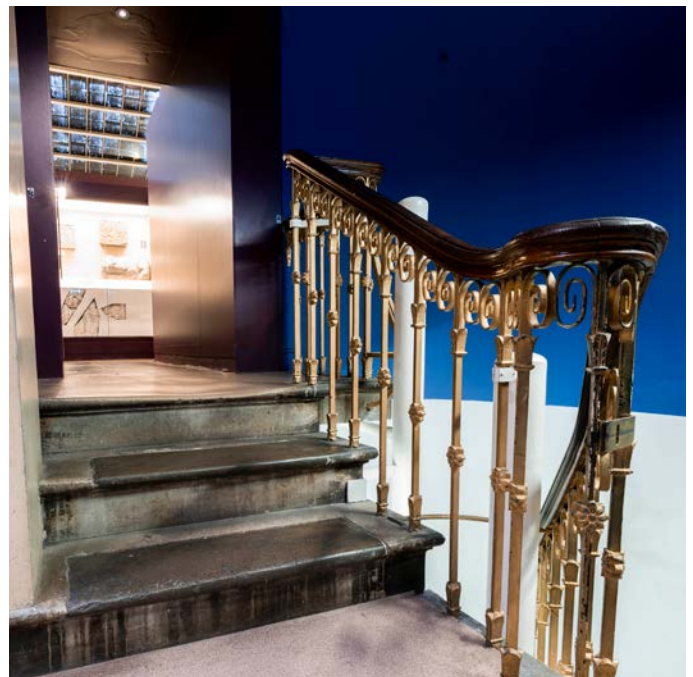
Steps in Ór - Bronze Age Gold



Steps in Viking Ireland



Steps in Medieval Ireland



Steps in Ancient Egypt

People I Might Meet

In the Museum, I might meet and see:



Tour Guides



VSOs



School groups



Other groups

Touch

There are interactive areas that I can touch and use.



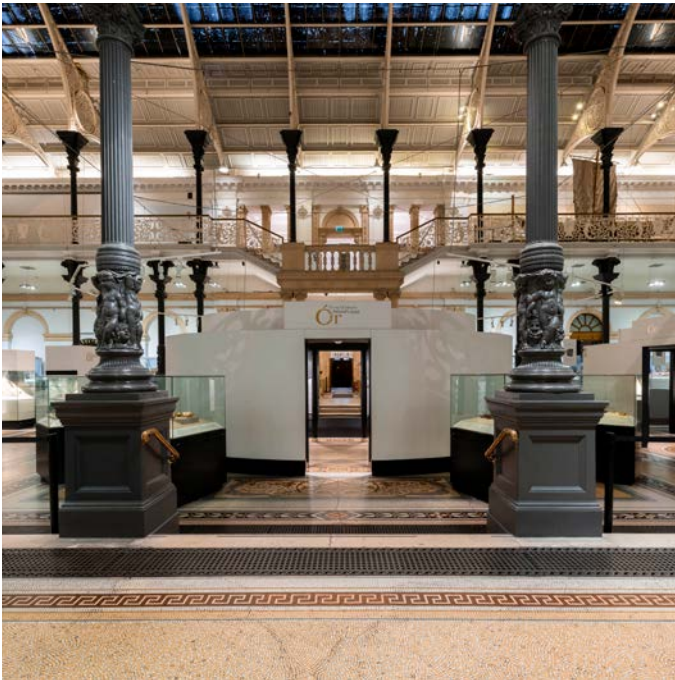
Most objects will be protected in cases. Other objects might not be in a case, but I can't touch everything I see. I can't touch objects that have a "No Touch" sign.



Visual

The Museum is a very visual space with many objects displayed behind glass. Lighting and glass can create reflections in some areas. There are also a lot of metal objects on display made from gold, silver, bronze and iron.

The galleries with the most reflections are:



Ór - Bronze Age Gold (ground floor)



The Treasury (ground floor)

There is an audio-visual room beside the Viking in Ireland exhibition on the first floor. This shows a video about the Vikings in Ireland. It is a dark room and the video has audio. I might be able to hear the sound from the video in the Viking Ireland exhibition.



Things I Might See

In the Museum, I might see:

There are many objects in the museum, so I might not be able to see everything. That is okay and I will get to see as many as I can.



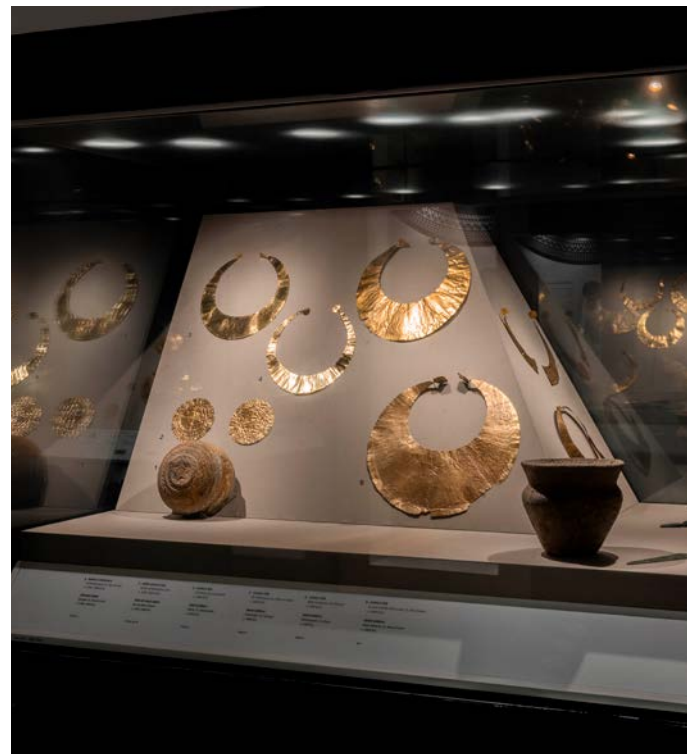
Stone Axes



Pottery



Wooden Boat



Metal Objects

Things I Might See Continued

In this Museum, there are some human remains on display. Human remains are on display in:

Prehistoric Ireland (ground floor)



Kingship and Sacrifice (ground floor)

The human remains on display in the Kingship and Sacrifice exhibition are very well preserved. Each of them are on display in a round pod and I can decide if I want to see them or not. There are some images and pictures of human remains in this exhibition too.



Things I Might See Continued

Viking Ireland (first floor)



This might make me feel uncomfortable and I don't have to look at them if I don't want to.

Ancient Egypt (first floor)



Sounds

I might hear the air conditioning and the heating system in some galleries. They are loudest in:

The end of the Viking Ireland exhibition

I might want to wear my ear defenders in the Museum in busy spaces.



The Ancient Egypt exhibition



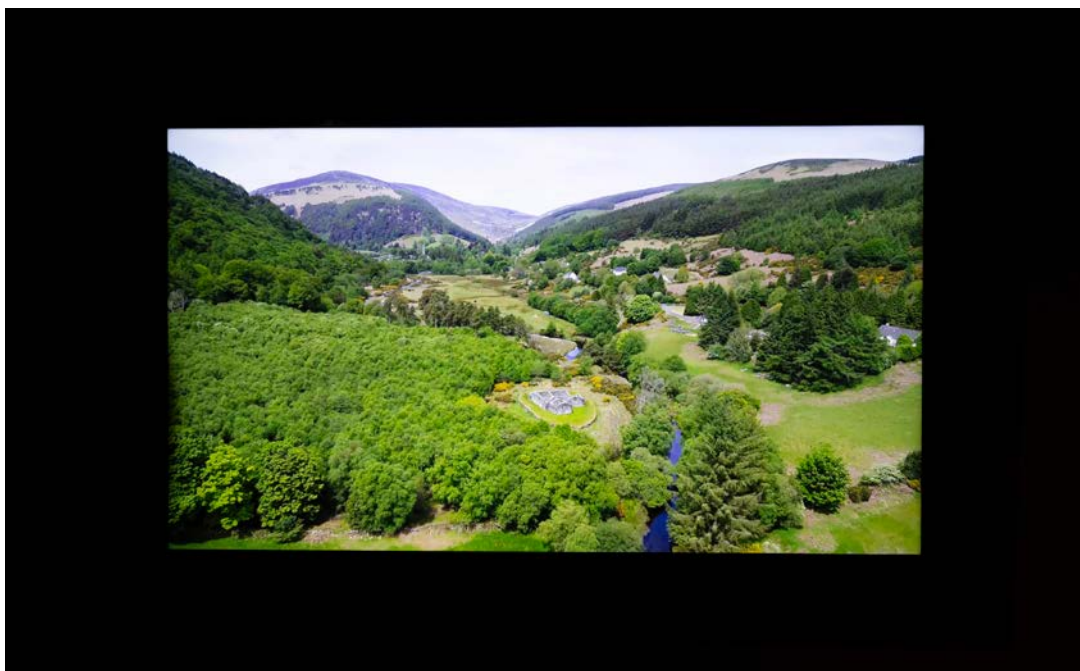
Sounds

Around the edge of a lot of the rooms, there is a metal grate for the heating. Sometimes, when people walk on it, it can make a noise.

The floors and steps are made from stone, mosaics and wood. Sometimes, the wooden floors and steps can creak when I walk on them.

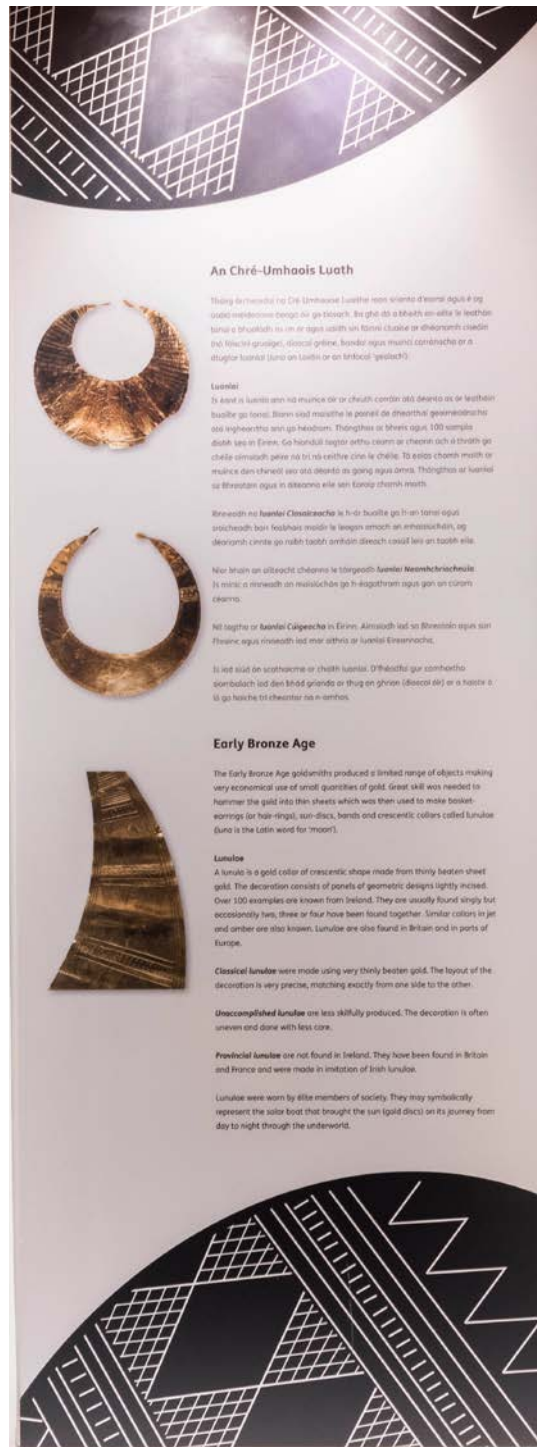


There are some videos with sound throughout the Museum. These are all marked on the sensory map.



Learning More

Panels on the walls and labels in cases tell me more about what I see.



An Chré-Umhaois Luath

Tháinig de réir a chéile na Cré-Umhaois Luath na réimse d'earraí agus é ag cur tús le meánaoise na n-Éire. Ba ghléasta a bhí ann an-éifeálach le leathúir, tairne agus bhrúilíní na n-Éire agus uachtair na h-Éire. Cuaisle de dhéanamh cluicín (bá), kinnelín, grúisín, díseal gréine, bonnán agus muilíní comhcheanglaí nó a dtugtar luathraí (luna) an Luath nó an t-Éire (‘lunula’).

Lunulaí

Tá sé seo ná luathraí ann ná muilíní óir nó chruinní corán nó beanna óir de leathúir buailte go foire. Bíonn siad muilíní le patrúil de dhéanamh gearrleathraí nó leighníní sin go héadrom. Tháinig siad ar thers 100 bliain d'aois leag in Éire. Go háirithe tagtar orthu eile in Éire agus i dtírí ge chéile óimníocht péire ná tré ná eiteire cinn le chéile. Tá eile chomh muilíní nó muilíní den chéile seo nó óimníocht as gairg agus óimníocht. Tháinig siad ar luathraí nó brúilíní agus in áiteanna eile sin Éire agus chomh eile.

Breathnaí na luathraí Clasaiceacha le h-áir buailte go h-éire. Tá siad eile agus siad chomh bheo leathraí sin le leagan amach an eile. Tá siad, ag déanamh cinn go n-áir buailte amháin díreach casúil leis an tairne eile.

Náir brúilín an tairne chomh le tairneacha luathraí Neomheánaice. Is mair a mair an tairneacha go h-éire agus go h-Éire chomh.

Náir taghtar na luathraí Clasaiceacha in Éire. Áiríonn siad na Breithe agus sin Éire agus mair an tairne agus luathraí Éireacha.

Is leathraí de scothraí nó chruinní luathraí. D'fhéadfaí gur comhcheanglaí siad leathraí den bhéid gránda nó thug an ghraí (diseal) nó a h-áir a siad go h-áir tré chomh na n-áir.

Early Bronze Age

The Early Bronze Age goldsmiths produced a limited range of objects making very economical use of small quantities of gold. Great skill was needed to hammer the gold into thin sheets which was then used to make brooch, ornaments for hair-rings, sun-discs, bands and crescentic collars called lunulae (Luna is the Latin word for 'moon').

Lunulae

A lunula is a gold collar of crescentic shape made from thinly beaten sheet gold. The decoration consists of panels of geometric designs lightly incised. Over 100 examples are known from Ireland. They are usually found singly but occasionally two, three or four have been found together. Lunula collars in jet and amber are also known. Lunulae are also found in Britain and in parts of Europe.

Classical lunulae were made using very thinly beaten gold. The layout of the decoration is very precise, matching exactly from one side to the other.

Unaccomplished lunulae are less skillfully produced. The decoration is often uneven and done with less care.

Provincial lunulae are not found in Ireland. They have been found in Britain and France and were made in imitation of Irish lunulae.

Lunulae were worn by elite members of society. They may symbolically represent the solar boat that brought the sun (gold discs) on its journey from day to night through the underworld.

6 POLISHED STONE CHISEL (PORCELLANITE)
River Shannon, Killaloe, Co. Clare
3800-2500 BC

SISÉAL CLOICHE SHASTA (CRÉ PHOICÉALLÁIN)
An tSionainn, Cill Dalua, Co. an Chláir
3800-2500 RCh

1934-104

7 POLISHED STONE AXEHEAD (PORCELLANITE)
River Shannon, Killaloe, Co. Clare
3800-2500 BC

CEANN TUA CHLOICHE SHASTA (CRÉ PHOIRCEALLÁIN)
An tSionainn, Cill Dalua, Co. an Chláir
3800-2500 RCh

1934-103

8 POLISHED STONE AXE (PORPHYRITIC ANDESITE)
Axe factory
Lambay Island, Co. Dublin
3600-2500 BC

TUA CHLOICHE SHASTA (AINDISÍT PHORFAIRINEACH)
Monarcha thuanna
Reacraínn, Co. Bhaile Átha Cliath
3600-2500 RCh

1965-65

9 STONE ADZEHEAD (PORPHYRITIC ANDESITE)
Axe factory
Lambay Island, Co. Dublin
3100-2500 BC

CEANN TÁL CLOICHE (AINDISÍT PHORFAIRINEACH)
Monarcha thuanna
Reacraínn, Co. Bhaile Átha Cliath
3600-2500 RCh

1965-61

Learning More Continued

I can also use interactive screens or watch videos to find more information.



There are some interactives with headphones.

I can pick these up, put them on, and listen to the information.



Gift Shop And Exiting The Museum

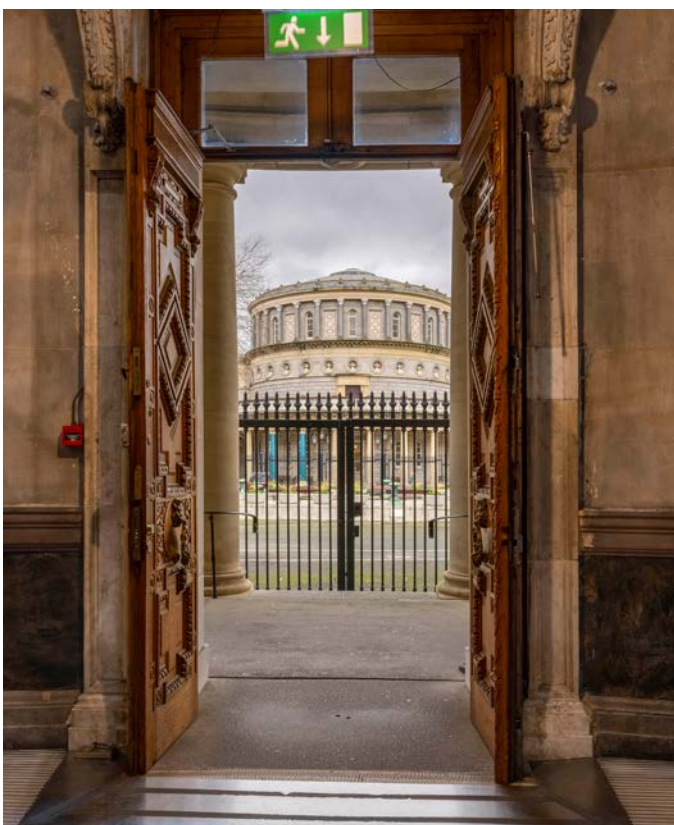
To exit the Museum, I can leave the same way and door that I used to come in.

I can also explore the gift shop on the ground floor, and exit the Museum from the gift shop through an automatic door.



Exit through the main door of the Museum

Exit through the shop



Before I Visit

The National Museum of Ireland is excited about my visit! Their staff are here to make sure I have a safe and enjoyable time.

For more information on the following I can click on the links below

- [Accessibility at the National Museum of Ireland](#)
- [Monthly Quiet Hours](#)
- [Planning Your Visit](#)
- [Events and What's On](#)

If I need help or more information, I can:

Email: bookings@museum.ie
Email: educationarch@museum.ie
Phone: 01 648 6453