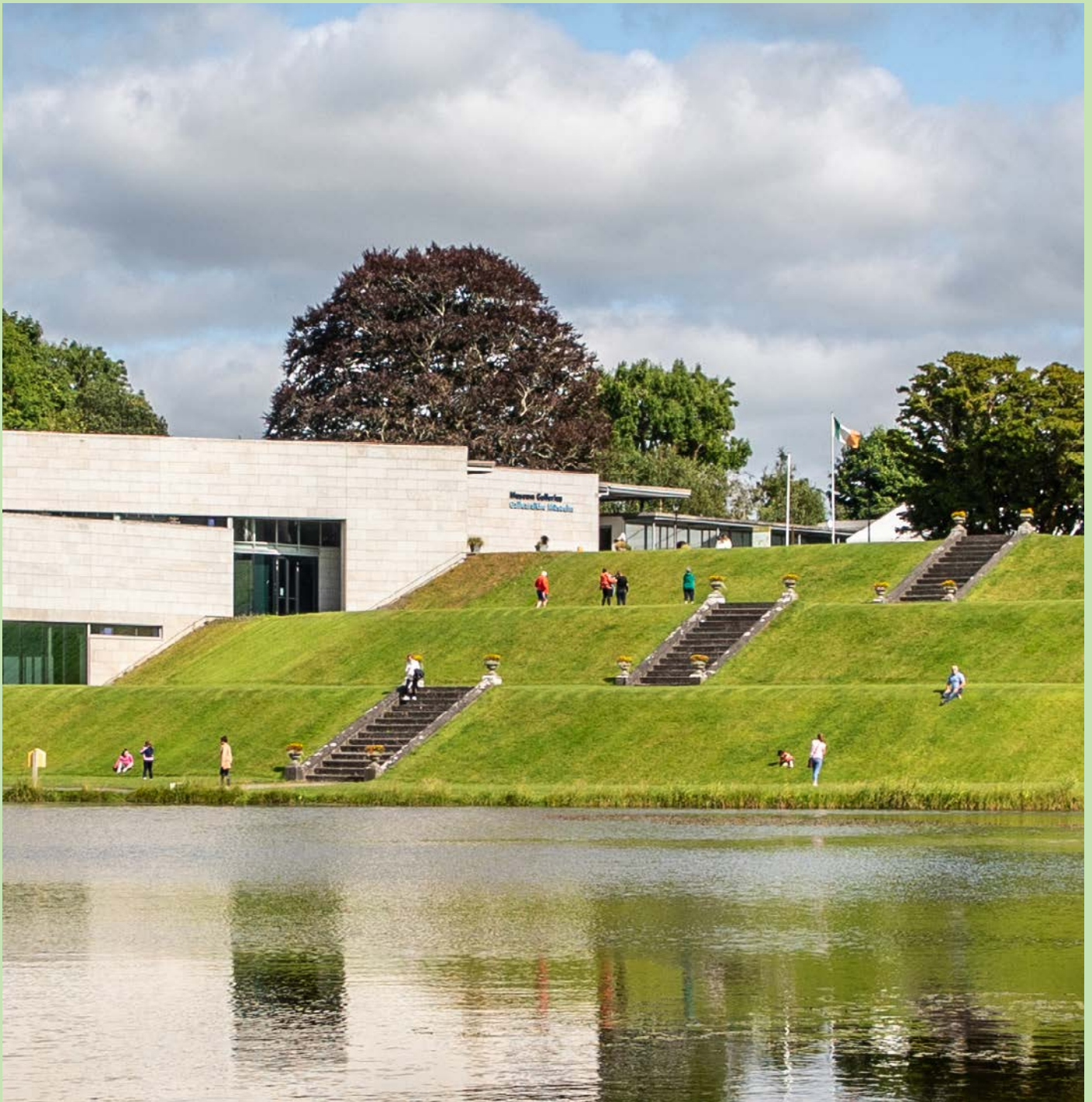


Ard-Mhúsaem
na hÉireann
National Museum
of Ireland

mus
eum



Visual Guide



This is the National Museum of Ireland, Turlough Park.
The Museum is free to visit.

Arriving at the Museum

Museums keep and display objects that tell us about people's lives. The National Museum of Ireland, Turlough Park displays objects that were made and used in everyday life in the past.



The Museum is on the grounds of Turlough Park. This is the main entrance gate.



People come to Turlough Park to visit the Museum and to walk around the grounds.

Arriving at the Museum



Some people might bring a picnic to enjoy if the weather is fine.



There is also a playground onsite.

Arriving at the Museum



If you arrive by car to Turlough Park you will park in the car park.



It's a short walk to the Museum buildings.

On the way, you can see a sign that shows a map of the grounds.

Exploring the Museum

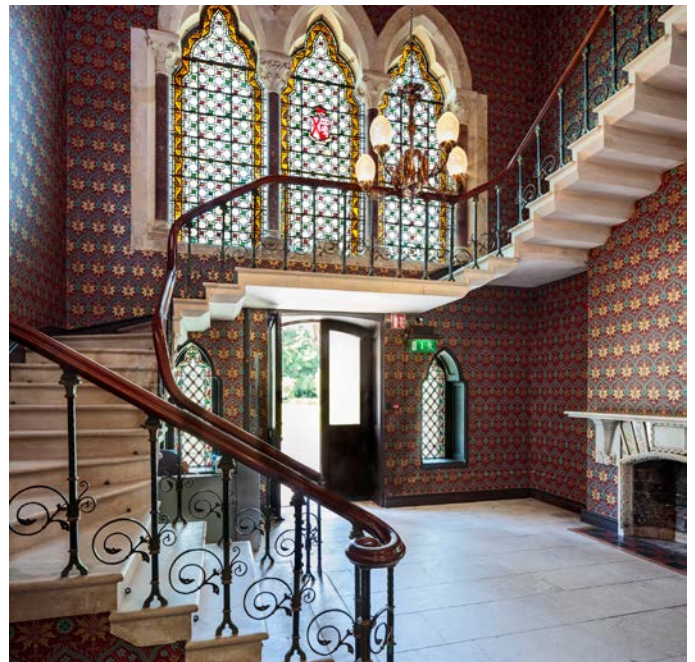


The first building you will see is Turlough Park House. The Fitzgerald family lived in this house a long time ago.



There are Museum offices in the upstairs rooms now.

You can visit the downstairs area of the House by going in the front entrance with the brown door.



There are three rooms to see on the ground floor of the House.

This is a photo of the Entrance Hall.

Shop & Café



To the right of the main House is the Museum Shop.



The archway will take you to the Museum Café.
You can sit outside if the weather is fine. There are also tables inside.

Exploring The Museum



There are public toilets in the courtyard on each side of the archway.



If you walk past the front of the House you will see the Museum Galleries at the back.

Exploring The Museum



This is the front entrance to the Museum. It has automatic doors. They open as you walk towards them.

Reception



Throughout the Museum Galleries, there is background music with wildlife noises. It can seem noisy sometimes.

You will come in to the Museum on Level A. The Museum has four floors and lots of space but sometimes there can be crowds.



If you want, you can bring your ear defenders to wear inside, or maybe bring your fidget.



This is the Reception Desk where you will be welcomed to the Museum by one of the staff. The Museum Galleries staff wear navy blue uniforms and a lanyard with their picture and name. The staff are very friendly and can help you find your way around the Museum.

Exploring The Museum



To the right of the Reception Desk are double doors that lead to the public toilets and exit.



There is also an Audio-Visual room where you can watch a video about the Museum. It is dark in this room and the video has a soundtrack.

Exploring The Museum



The four floors of the Museum have objects on display. If one part of the Museum is busy you can easily go to a different floor where there are less people.

This is Level A, the same level where you walked in.



You can go down the stairs or take the lift to the lower levels. They are called Level B, Level C, and Level D.

Exploring The Museum

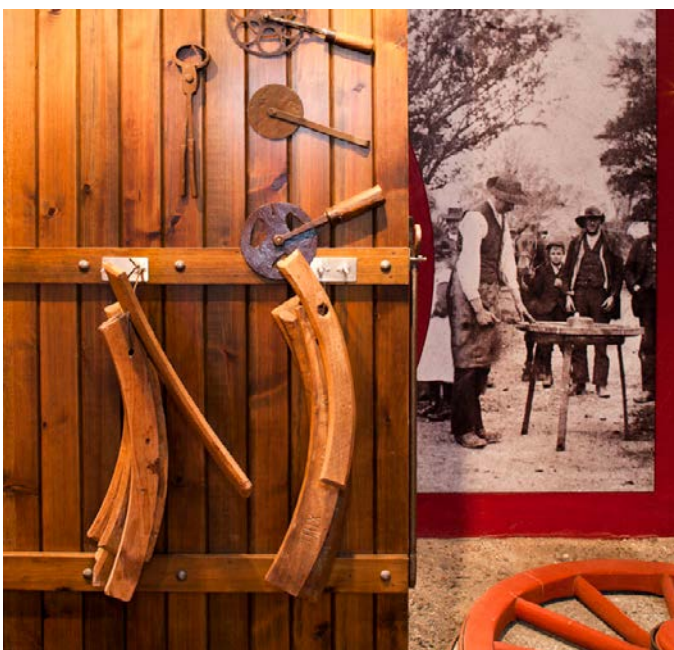


This is Level B. Some of the objects on display are behind glass. Some other objects are on open display.



We ask everyone to not touch the objects. This is because we want to protect them, to make sure they are always here for everyone to see.

Exploring The Museum



If you go down the stairs or lift again, you will get to Level C.

This is the largest floor in the Museum. There are lots of different areas and spaces, and lots of things to see.

Here are some of the things you can see on Level C.

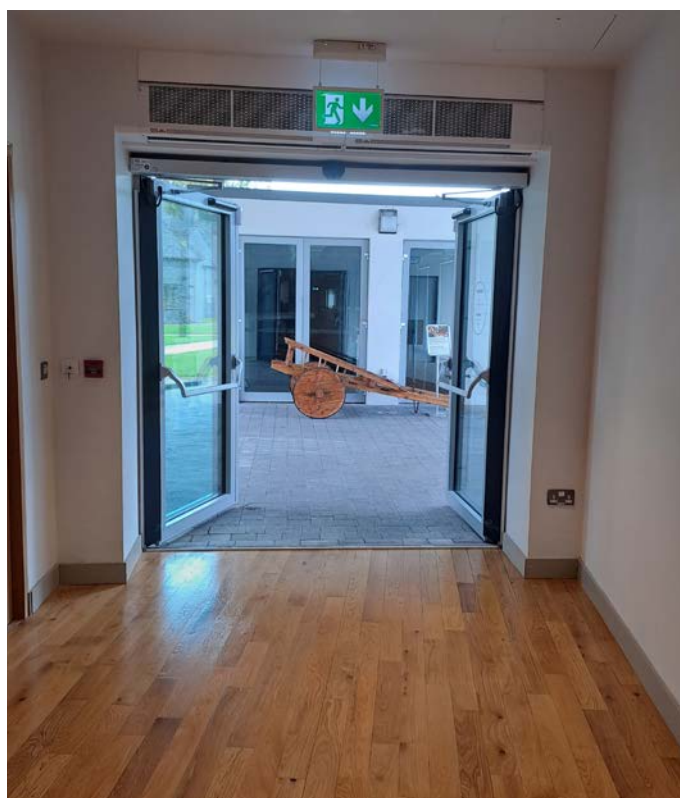
Exploring The Museum



The next floor down is Level D.

This is our space for exhibitions that are on display for a short time.

That means each time you visit there might be something new to see on this level.



To leave the Museum, you need to take the stairs or the lift up to Level A again.

The exit is next to the Reception desk.

Before I Visit

The National Museum of Ireland is excited about my visit! Their staff are here to make sure I have a safe and enjoyable time.

For more information on the following I can click on the links below

- [Accessibility at the National Museum of Ireland](#)
- [Monthly Quiet Hours](#)
- [Planning Your Visit](#)
- [Events and What's On](#)

Opening hours

Sunday & Monday 1pm - 5pm
Tuesday to Saturday 10am - 5pm
Closed Good Friday, Christmas Day and St Stephen's Day.

General Contact Details

National Museum of Ireland,
Turlough Park, Castlebar,
Co. Mayo, F23 HY31
T: 353 94 903 1755
E: tpark@museum.ie
www.museum.ie

If I need help or more information, I can:

Email: tpark@museum.ie
Email: educationtph@museum.ie
Phone: 353 94 903 1751

Getting Here

Via the N5 approximately
8km east from Castlebar

Sat. Nav: Latitude/Longitude
53.8840, -9.2125

Bus routes and times:

Bus Éireann 353 96 71800
Local Link Mayo LocalLinkMayo.ie

Train routes and times:

Castlebar
Train Station 353 94 902 1222

